

# EH PRO FLASH HEADS

> EH PRO 1500 / 3000 / 6000

HENSEL  
STUDIOTECHNIK

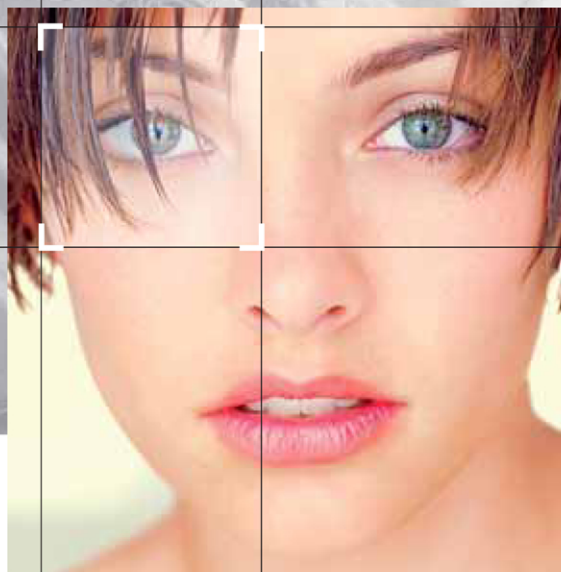


PHOTO: RICHARD HUNE

## > THE CLASSIC FOR ALL MOMENTS <

Totally professional, totally stable in every aspect and totally compatible. In short, the NEW EH Pro line from HENSEL is the total sum of 40 years experience in manufacturing.

Housed in a 2.5 mm thick solid aluminum drawn casing with an all metal quick-change reflector system and a cast metal pan tilt plate made of aluminum, these heads are perfect for any professional for their construction alone. The heads can be used with all EH accessories. As with all HENSEL heads, the reflector can be put on or taken off in any position and/or rotated 360° while attached. Slot-in user replaceable flash tubes, bright 650W (Europe) or 300W (USA) modeling light (for which there is a switch for on the head), high performance and quiet fan, integrated umbrella holder with fast clip fitting and a clear safety dome are all part of the basic equipment. For further color-corrected and frosted safety domes available. please see price list.

The flash tube/ modeling lamp positions have been optimized using specialized analysis software and stroboscope technology so as to offer the best possible combination of flash light yield and modeling light life. All this combined with the almost legendary durability of the flash tubes always gives stable color temperature and low maintenance costs.

**Product Code No. available on page 14!**

### THE HIGHLIGHTS

> Sturdy housing in 2.5 mm aluminium drawn profile > Metal reflector quick-change system > Utmost stability for reflectors and accessories > Robust reflector holder plate in cast aluminium > Slot-in flash tubes > Slot-in safety dome (several models available) > Further improved pan-tilt support with excellent stability > New flash cable inlet at the head > 5 m flash cable with low inner resistance for maximum performance > Bright modeling light up to 300 W > Powerful and silent fan > On / off switch for modeling lamp on the head.